

by maytronics

Quick start guide



Dolphin POOLSTYLE

Thank you for purchasing a Maytronics Robotic Pool Cleaner.

The Robotic Pool Cleaners by Maytronics deliver advanced cleaning technologies, long lasting performance and easy maintenance. You and your family will be free to enjoy swimming with full confidence that your pool is completely clean.

Cautions & Warnings

- Use the originally supplied power supply only.
- Do not use an extension cable in any case whatsoever.
- Ensure the electrical outlet is protected by a ground fault interrupter (GFI) or an earth leakage interrupter.
- Keep the power supply out of standing water.
- Take the Robot Pool Cleaner out of the pool before allowing people to enter the pool.
- Unplug the power supply before servicing.
- Do not pull the Pool cleaner from the pool using the cable.
- Use the Pool Cleaner in the following water conditions only: Chlorine Max 4 ppm; pH 7.0 - 7.8; Temperature 6 -34°C (43-93°F); NaCl Maximum = 5000 ppm.
- Specifications:
Motor protection: IP 68
Minimum depth: 0.80m/2.6ft
Maximum depth: 5m/16.4ft

Helpful hints

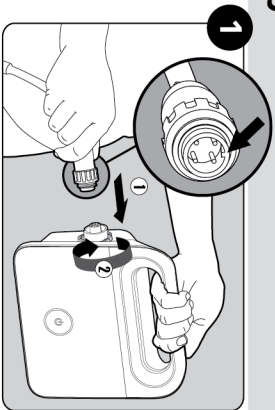
- When working, the Power Supply should be placed in the shade.
- If the Dolphin is fitted with combined or wonder brushes, gently squeeze the brushes until they are soaked with water.
- Release minimal required floating cable length to ensure proper pool coverage. Leave excess cable rolled outside the pool.
- After each cleaning cycle wash the filter bag or cartridge. Clogged filter bags reduce scanning and cleaning efficiency.
- Once a week unplug the cable from the power supply, unwind the tangled portions of the cable, straighten it out and leave it in the sun for several hours.
- Store the pool cleaner in a shady place on its Caddy, if not on a caddy, place the pool cleaner upside down.



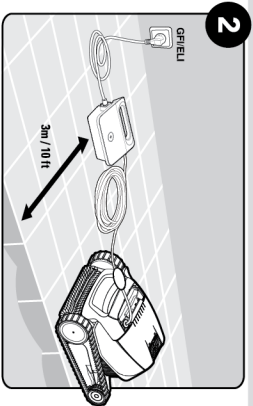
For a detailed manual (including videos):
manuals.maytronics.com/99996144-UK



Set Up

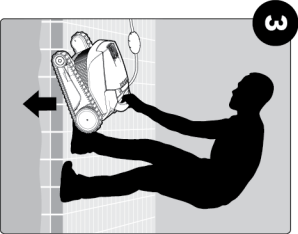


Attach the floating cable to the power supply.



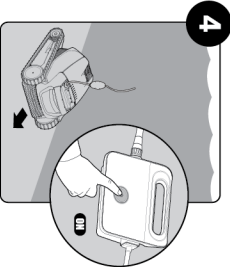
Position the power supply at least 3m/10ft away from the edge of the pool.

Into the pool



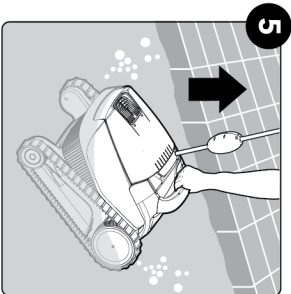
Put the Pool Cleaner into the pool.
Release the Pool Cleaner and let it sink to the floor of the pool.
Make sure that the floating cable is free of any obstructions.

Operation



Turn the power supply ON.
The Pool Cleaner will now operate until it has reached the end of the cleaning cycle.

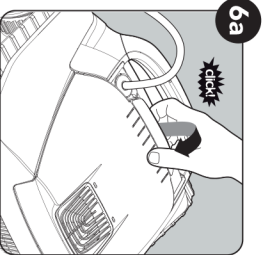
Out of the pool



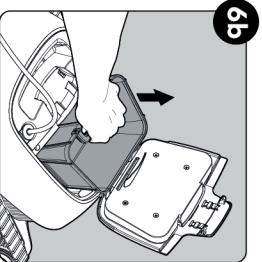
6 Cleaning the filter

It is highly recommended to clean the filter basket after each cleaning cycle.
Note: Don't let the filter cartridges dry out before cleaning.

⚠ **Unplug the power supply before servicing**



Open the filter cover.



Lift up the basket.



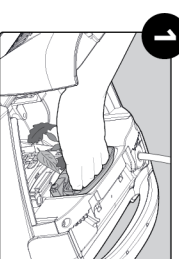
7 Storage

Coil the cable and store in a cool, dry place on the Caddy.
Do NOT store the robot where it will be exposed to direct sunlight, excessive heat or to frost.

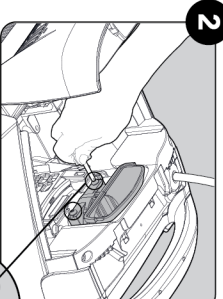
Cleaning the impeller

If you notice debris trapped in the impeller:

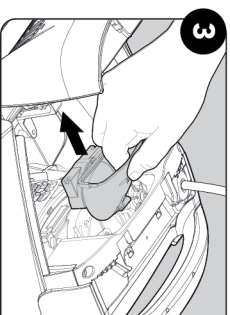
⚠ **Unplug the power supply before servicing**
Clean the debris trapped in the impeller opening, according to the following steps:



1 If the debris is not reachable follow the next steps.



2 Using a short screwdriver open the 2 screws.



3 Pull the impeller cover backwards to release it. Clean the debris trapped around the impeller. Assemble the impeller cover.